

Nokia Customer Care
NHL-9, RM-69 Series Transceivers

**6 – Disassembly/Assembly
Instructions**

[This page intentionally blank]

Table of Contents

	Page No
NHL-9 and RM-69 Disassembly Instructions	5
Changing the Dome Sheet.....	11
Reassembly	12

[This page intentionally blank]

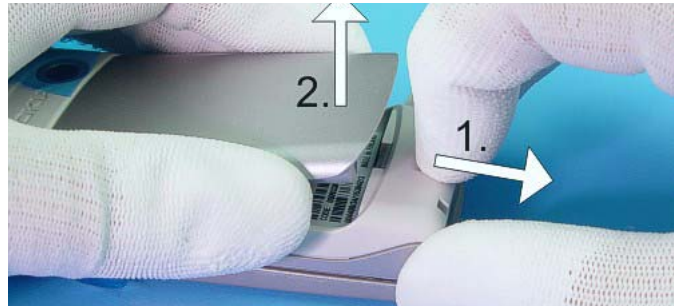
NHL-9 and RM-69 Disassembly Instructions

(1)



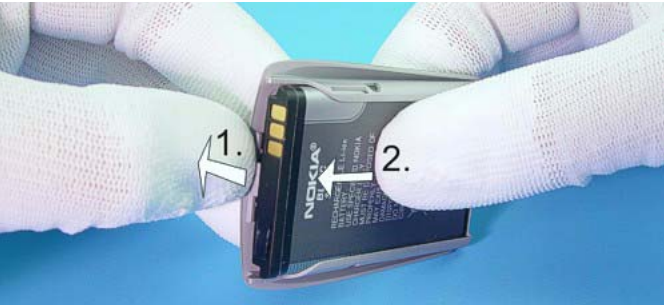
Check the condition of the window. Protect the window with a film.

(2)



Pull the locking latch (1) and remove the battery cover (2).

(3)



Remove battery from the battery cover as shown.

(4)



To remove the A-cover, first release the clip first by using SRT-6.

(5)



Then open the flip assy up and right (90 degrees).

(6)



Now, open the other side clips with SRT-6. Start with the clip as shown.

(7)



Now, open the opposite side.

(8)



Lift the topside of the A-Cover a bit and open the bottom clip.

(9)



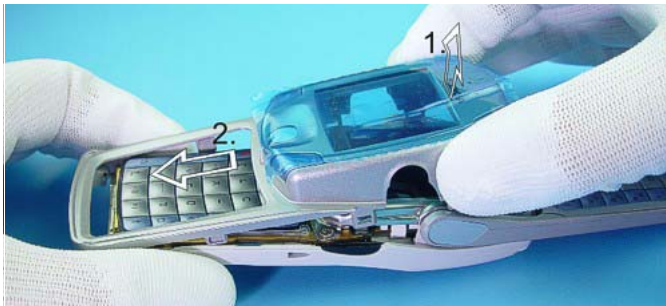
Now, open the clip on the other side.

(10)



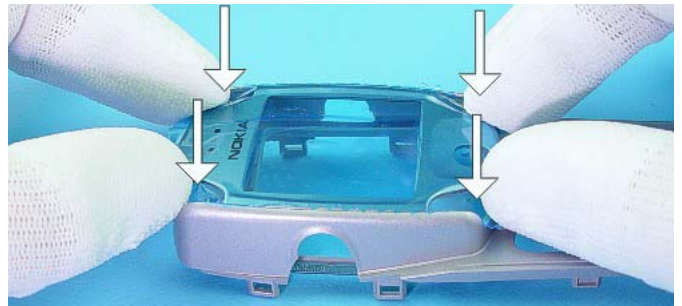
Open the flip assy completely.

(11)



First lift the topside of the A-cover then move the A-cover forward.

(12)



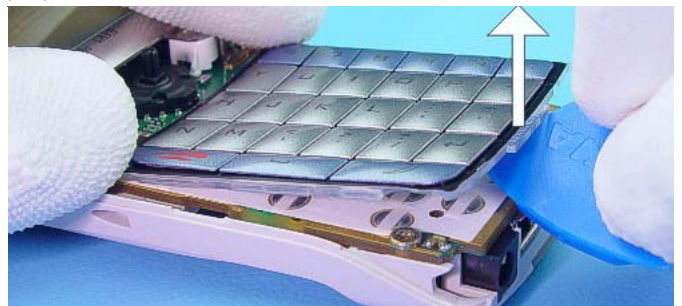
Press down the function keys as shown to remove them.

(13)



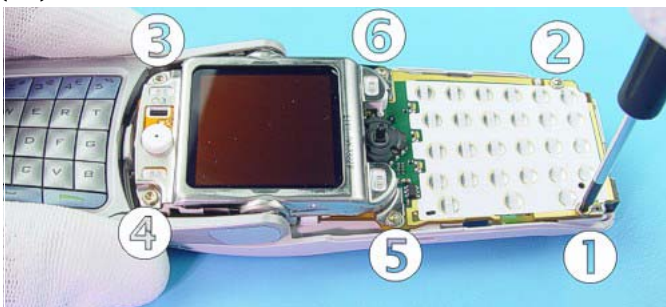
Remove the joystick button.

(14)



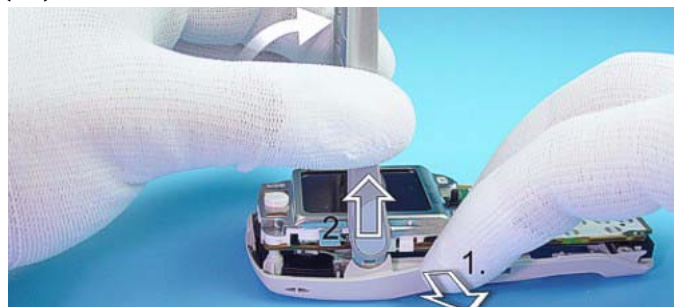
The bottom side of the qwerty keymat right is glued to the domesheet on the engine module. Therefore, move up the qwerty keymat right with SRT-6 carefully. Mind the underneath LEDs.

(15)



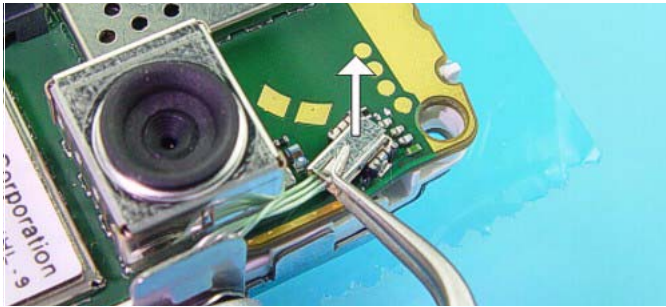
Unscrew the six TORX PLUS® size 6 screws, using the order shown. **For assembly, the reverse order and a torque of 19Ncm have to be used.**

(16)



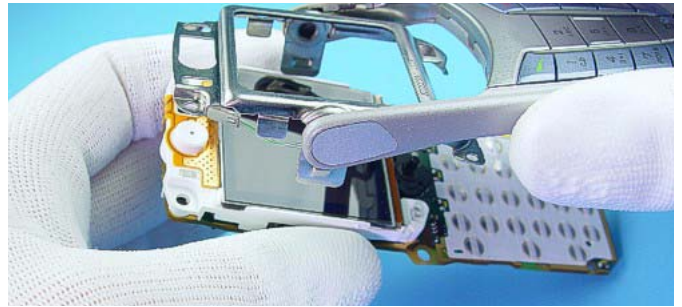
Pull the flip assy to remove the engine from the B-cover assy.

(17)



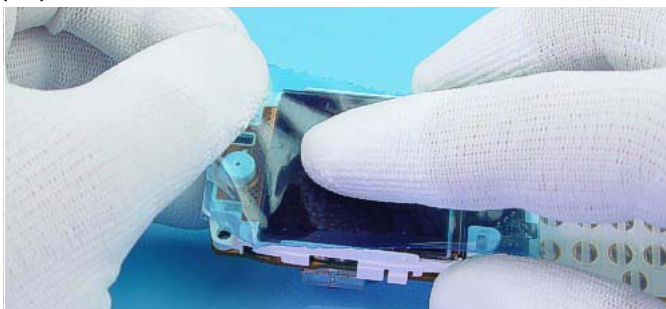
Carefully remove the coax connector of the flexible coax cable assy with tweezers, while taking care not to cant the connector.

(18)



Remove the flip assy from the engine module.

(19)



Protect the LCD with a film.

(20)



Carefully place SRT-6 between the qwerty frame and flip.

(21)



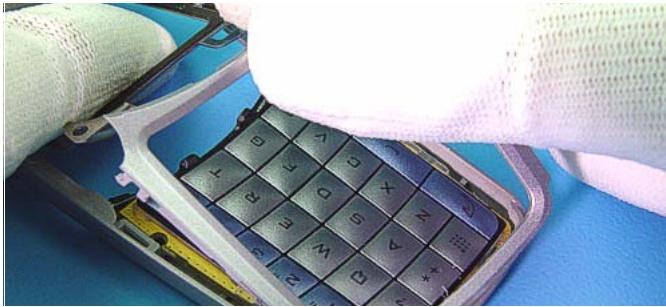
Move SRT-6 on along the edge.

(22)



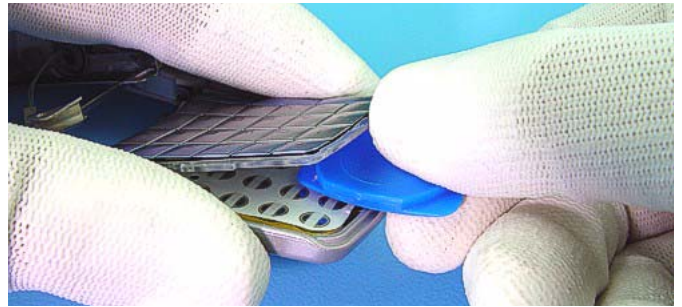
To release the leaving snaps, use fingers to grip the qwerty frame.

(23)



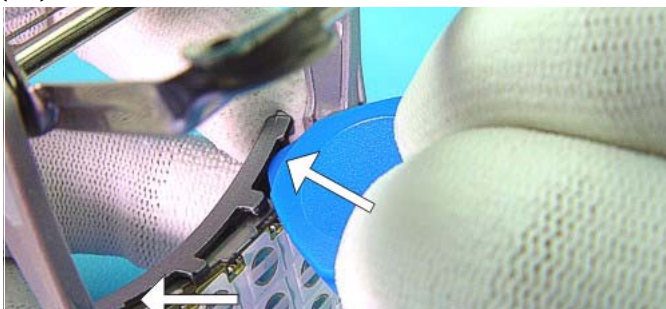
The qwerty frame is loose. Always use a new frame during assembly

(24)



Remove the qwerty keymat left from the domesheet, starting at the middle position.

(25)



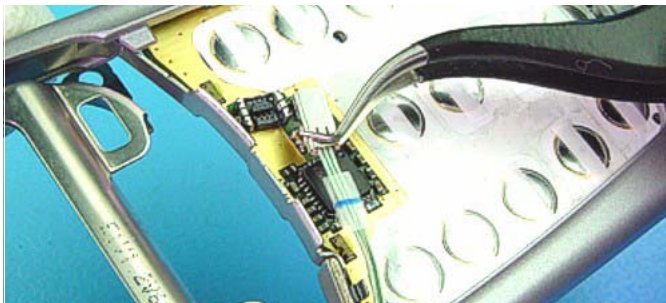
Unlock the two snaps of T9 keymat with SRT-6.

(26)



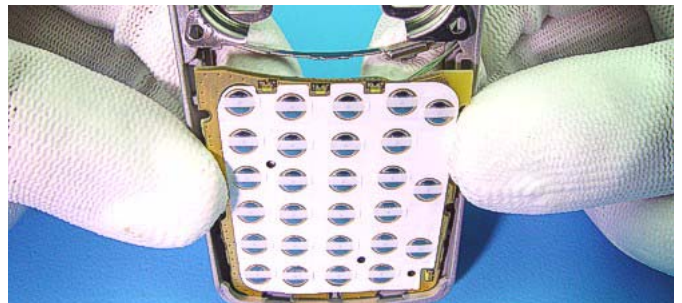
Remove the T9 keymat

(27)



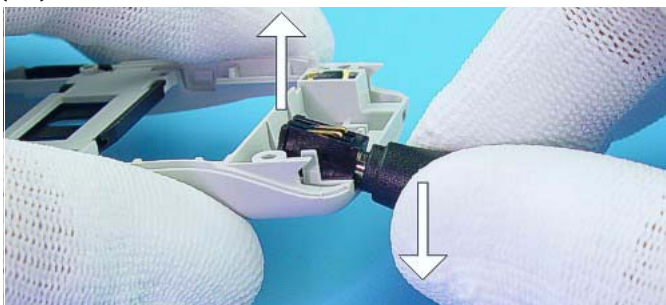
Carefully remove the connector of the flexible coax cable assy with tweezers, while taking care not to cant the connector.

(28)



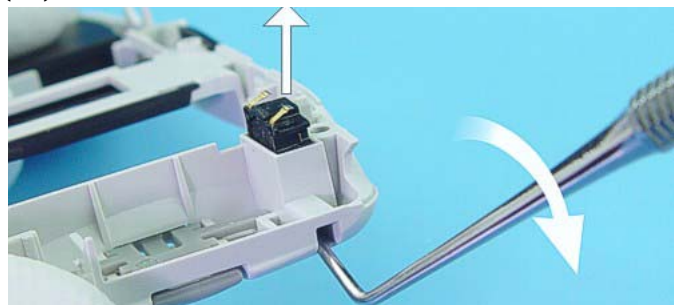
Push out the TF6 flip electric module from the back-side to the front.

(29)



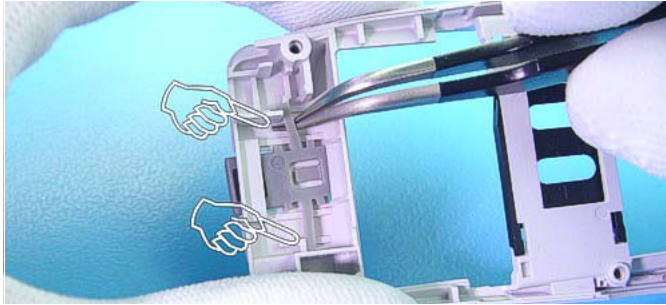
A DC plug can be used to remove the DC-jack.

(30)



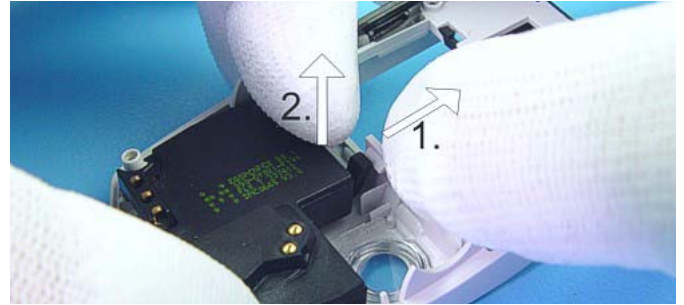
Put the tip of dental tool into the microphone opening and lever up the microphone.

(31)



Unlock the plastic clips of the locking latch.

(32)



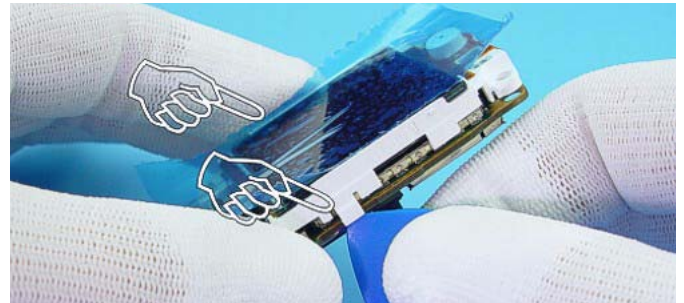
To remove the antenna assy, bend the B-cover's clip a bit. Lift up the bottom side of the antenna assy and take care not to damage the spring contacts of the antenna assy

(33)



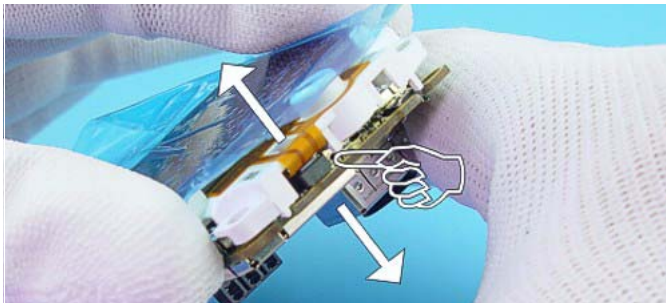
Remove the SIM cover.

(34)



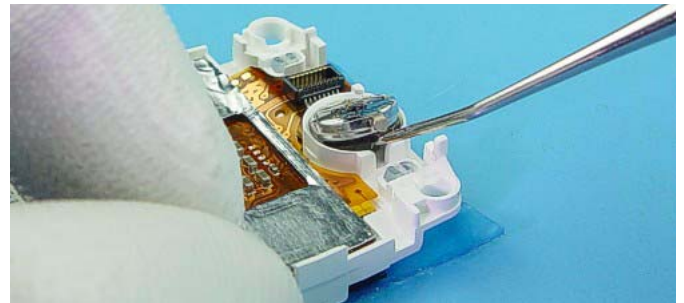
Open the LCD module clips on both sides.

(35)



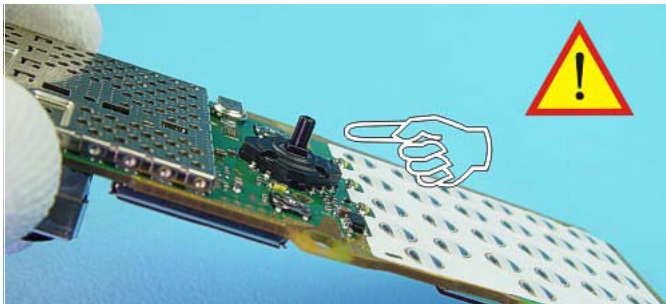
To unplug the LCD module connector by pulling the modules apart very carefully.

(36)



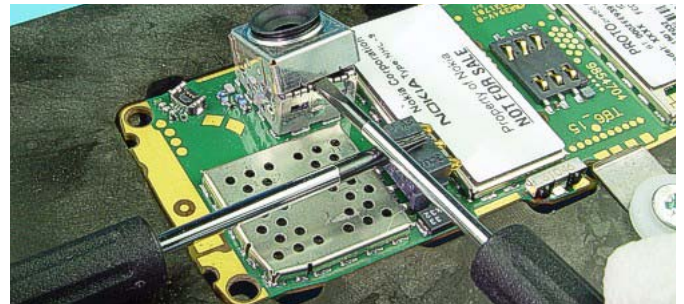
The earpiece is attached with an earpiece foam tape. Always use a new tape when mounting the earpiece

(37)



When placing the module upside down on the desk, take care not to damage the joystick. Use the soldering jig when repairing.

(38)



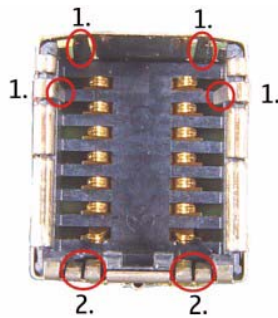
Use the battery connector as base and lever up the connector shield.

(39)



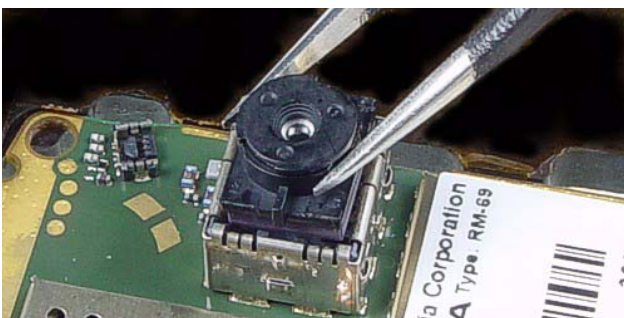
For 6822 use side **(A)**; For 6820 use side **(B)**.

(41) Camera connector 6822



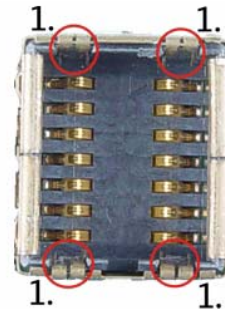
VGA Camera Module is attached with **six** snaps into its guidance. Place the SS-49 with side **(A)** as shown in the next picture and unlock the snaps on both sides. Note release order **(1. - 2.)**.

(43)



Do not touch contacts and camera lens. Use always tweezers for assembly and disassembly.

(40) Camera connector 6820



CIF Camera Module is attached with **four** snaps into its guidance. Place SS-49 with side **(B)** as shown in the picture and unlock the snaps on both sides. Note releasing order.

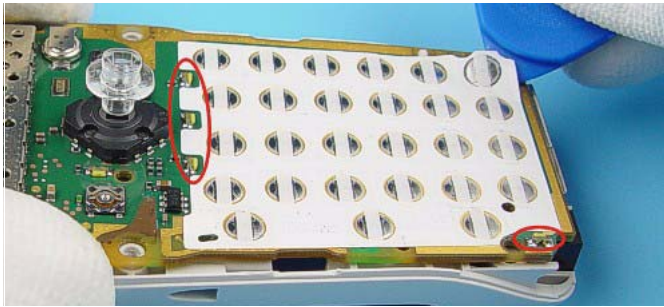
(42)



Place SS-49 as shown in the picture and unlock the snaps on both sides. Remember the tool sides – Side **(A)** for 6822 and side **(B)** for 6820.

Changing the Dome Sheet

(1)



To loosen the corner of the keydome, use SRT-6. Be careful not to damage the LEDs. B-cover or soldering jig can be used to fix the power board.

(2)



To avoid remains of glue, tear off the keydome in diagonal direction . Check pads for cleanliness.

(3)



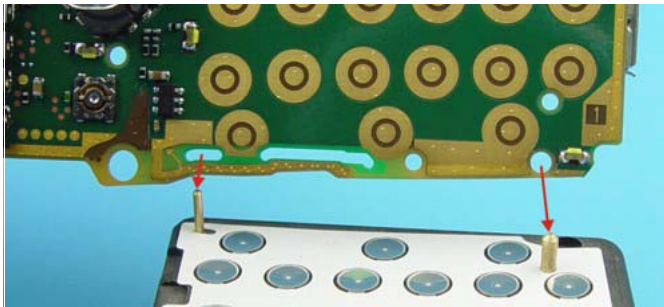
Place a new keydome on to the assembly jig. Note the guiding pins.

(4)



Remove the protection foil. Do not touch the adhesive side of the keydome.

(5)



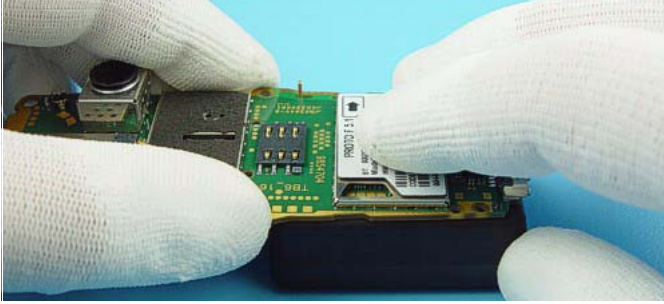
Place the power board on the jig. Note the guiding pins.

(6)



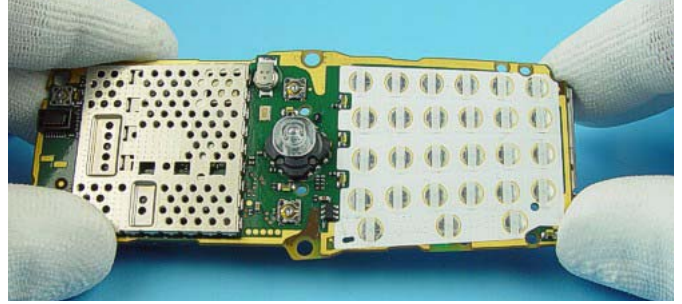
This is the correct position of the assembly jig.

(7)



Carefully press the power board onto the keydome.

(8)



Check that the keydome is properly mounted to the power board.

Reassembly

Reassembly should be in reverse order to disassembly unless otherwise stated.